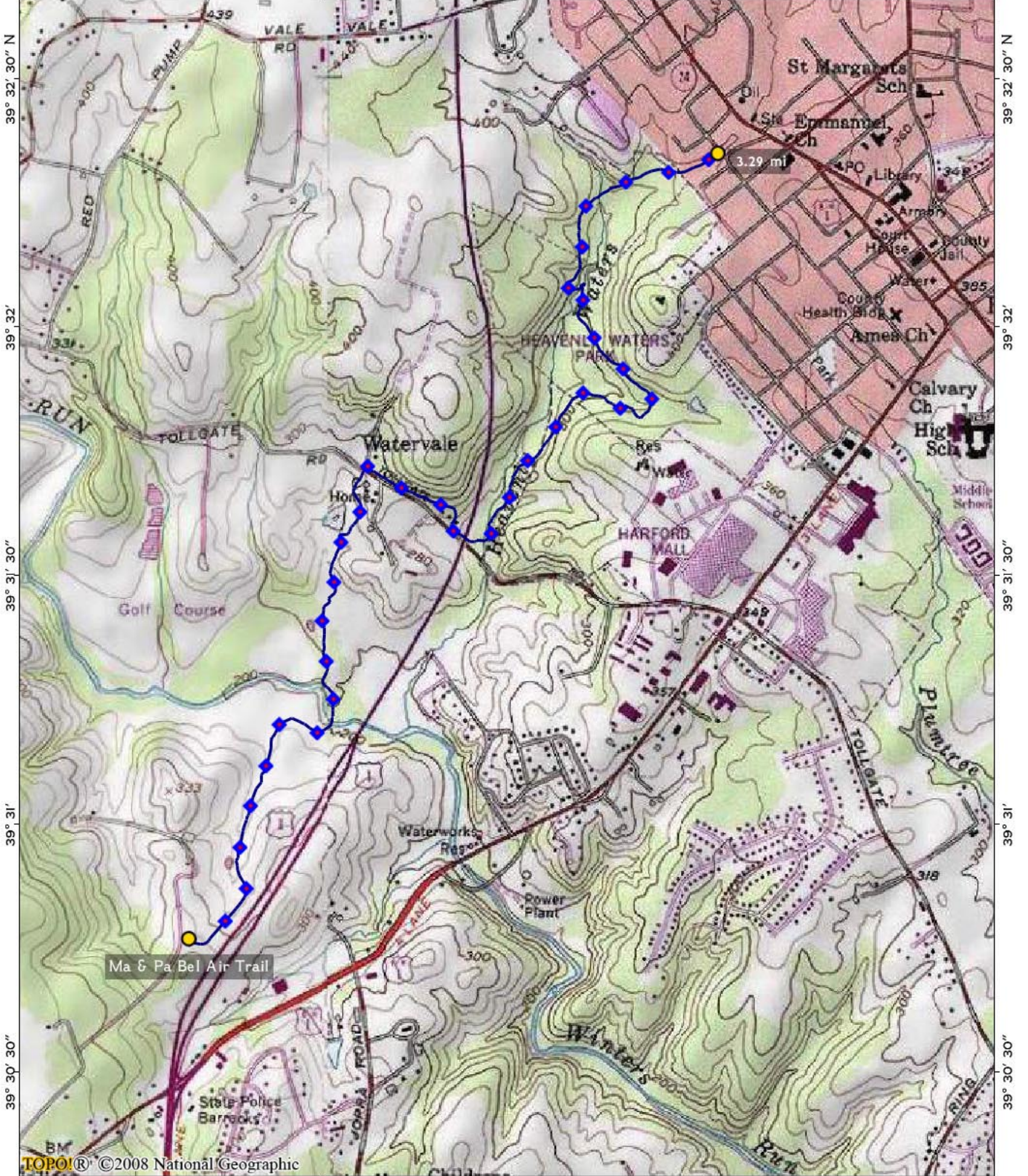


76° 23' 76° 22' 30" 76° 22' 76° 21' 30" 76° 21' W WGS84



39° 32' 30" N
39° 32'
39° 31' 30"
39° 31'
39° 30' 30"

39° 32' 30" N
39° 32'
39° 31' 30"
39° 31'
39° 30' 30"

TOPO!® ©2008 National Geographic

76° 23' 76° 22' 30" 76° 22' 76° 21' 30" 76° 21' W WGS84

